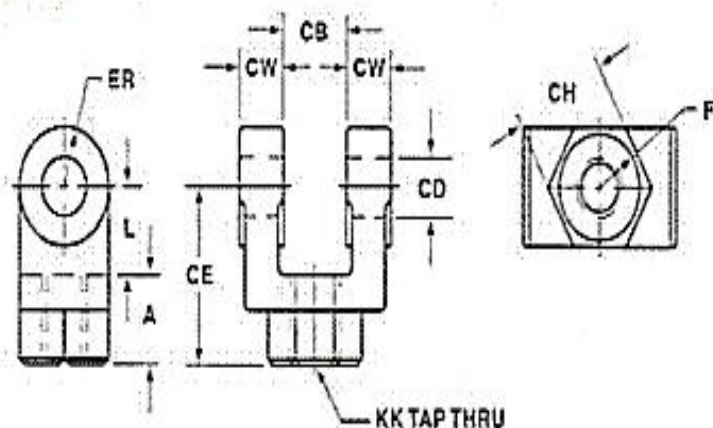




ROD CLEVISES

ROD CLEVISES



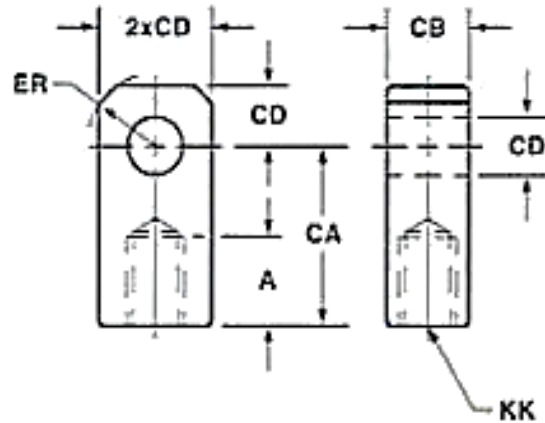
PART #	CB	CD	CE	CH	CW	F	L	A	KK	ER
BDC-05	.765	1/2	1 1/2	1	1/2	1	3/4	3/4	7/16 - 20	1/2
BDC-07	1.265	3/4	2 3/8	1 1/4	5/8	1 1/4	1 1/4	1 1/8	3/4 - 16	3/4
BDC-07M	1.265	3/4	2 1/8	1 3/8	5/8	1 1/4	1	1 1/8	3/4 - 16	3/4
BDC-10	1.515	1	3 1/8	1 1/2	3/4	1 1/2	1 1/2	1 5/8	1 - 14	1
BDC-10M	1.515	1	2 15/16	1 1/2	3/4	1 5/8	1 5/16	1 5/8	1 - 14	1
BDC-13	2.032	1 3/8	4 1/8	2	1	2	2 1/8	2	1 1/4 - 12	1 3/8
BDC-13M	2.032	1 3/8	3 3/4	2	1	2	1 3/4	2	1 1/4 - 12	1 3/8
BDC-17	2.531	1 3/4	4 1/2	2 3/8	1 1/4	2 3/8	2 1/4	2 1/4	1 1/2 - 12	1 3/4
BDC-20	2.531	2	5 1/2	2 15/16	1 1/4	2 15/16	2 1/2	3	1 7/8 - 12	2
BDC-25	3.032	2 1/2	6 1/2	3 1/2	1 1/2	3 1/2	3	3 1/2	2 1/4 - 12	2 1/2
BDC-30	3.032	3	6 3/4	3 7/8	1 1/2	3 7/8	3 1/4	3 1/2	2 1/2 - 12	2 3/4
BDC-30M	3.032	3	6 3/4	3 7/8	1 1/2	3 7/8	3 1/4	3 1/2	2 1/2 - 12	3
BDC-35	4.032	3 1/2	8 1/2	5	2	5	4	4 1/2	3 1/4 - 12	3 1/2
BDC-35M	4.032	3 1/2	7 3/4	5	2	5	4 1/4	3 1/2	3 1/4 - 12	3 1/2
BDC-40	4.532	4	10	6 1/8	2 1/4	6 1/8	4 1/2	5 1/2	4 - 12	4

MATERIAL: 05 thru 10, 1144 Steel Forging; 13 thru 40, Ductile Iron Casting;
 05 thru 10, 303 Stainless Steel Forging or 316 Stainless Steel Flat Stock.
 METRIC THREADS: "KK" available from stock; specials on request



ROD EYES

ROD EYES



PART #	A	CA	CB	CD	ER	KK
BDE-05	3/4	1 1/2	3/4	1/2	5/8	7/16 - 20
BDE-07	1 1/8	2 1/16	1 1/4	3/4	7/8	3/4 - 16
BDE-10	1 5/8	2 13/16	1 1/2	1	1 3/16	1 - 14
BDE-10M	1 1/8	2 3/8	1 1/2	1	1 7/16	7/8 - 14
BDE-13	2	3 7/16	2	1 3/8	1 9/16	1 1/4 - 12
BDE-17	2 1/4	4	2 1/2	1 3/4	2	1 1/2 - 12
BDE-20	3	5	2 1/2	2	2 1/2	1 7/8 - 12
BDE-20M	2 1/4	4 3/8	2 1/2	2	2 7/8	1 3/4 - 12
BDE-25	3 1/2	5 13/16	3	2 1/2	2 13/16	2 1/4 - 12
BDE-30	3 1/2	6 1/8	3	3	3 1/4	2 1/2 - 12
BDE-30M	3 5/8	6 1/2	3 1/2	3	3 1/4	2 3/4 - 12
BDE-35	4 1/2	7 5/8	4	3 1/2	3 7/8	3 1/4 - 12
BDE-35M	5	7 5/8	4	3 1/2	3 7/8	3 1/2 - 12
BDE-40	5 1/2	9 1/8	4 1/2	4	4 7/16	4 - 12
BDE-40M	5 3/4	9 1/8	5	4	4 7/16	4 1/2 - 12

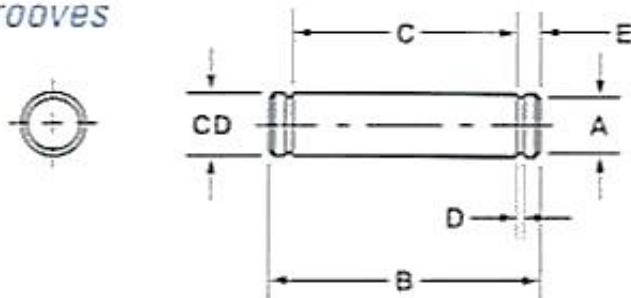
MATERIAL: 05 thru 20, C.F. Bar; 25 thru 40, Steel Plate
 METRIC THREADS: "KK" available from stock; specials on request



PIVOT PINS

PIVOT PINS

Grooves



PART #	CD	A	B	C	D	E
BDP-05G	.500	.468	2.094	1.875	.041	.109
BDP-07G	.750	.704	2.875	2.625	.048	.125
BDP-10G	1.000	.940	3.375	3.125	.048	.125
BDP-13G	1.375	1.291	4.485	4.187	.056	.149
BDP-17G	1.750	1.650	5.547	5.188	.068	.180
BDP-20G	2.000	1.886	5.547	5.188	.068	.180
BDP-25G	2.500	2.360	6.625	6.188	.086	.219
BDP-30G	3.000	2.838	6.780	6.250	.103	.265
BDP-35G	3.500	3.316	8.845	8.125	.120	.360
BDP-40G	4.000	3.792	9.845	9.125	.120	.360

MATERIAL: CD 1144 (Aval. in Stainless Steel)

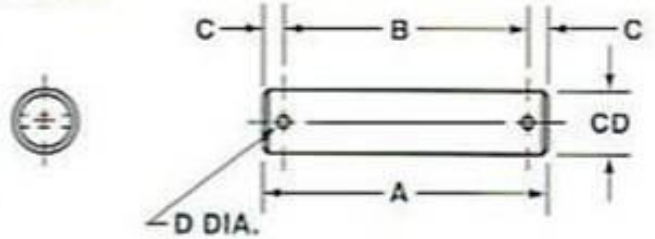
HEAT TREATMENT: Nitrotec



PIVOT PINS

PIVOT PINS

Holes



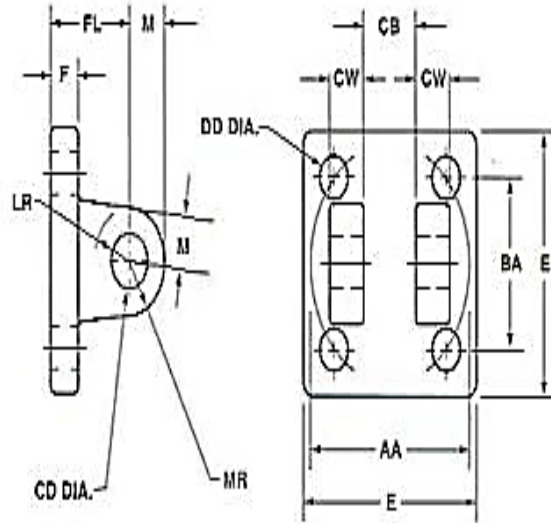
PART #	CD	A	B	C	D
BDP-05H	.500	2.281	1.938	.172	.106
BDP-07H	.750	3.094	2.719	.188	.140
BDP-10H	1.000	3.594	3.219	.188	.140
BDP-13H	1.375	4.656	4.250	.203	.173
BDP-17H	1.750	5.656	5.250	.203	.173
BDP-20H	2.000	5.719	5.281	.219	.204
BDP-25H	2.500	6.781	6.313	.234	.219
BDP-30H	3.000	6.844	6.344	.250	.250
BDP-35H	3.500	8.969	8.406	.282	.312
BDP-40H	4.000	9.969	9.406	.282	.312

MATERIAL: CD 1144 (Aval. in Stainless Steel)
HEAT TREATMENT: Nitrotec



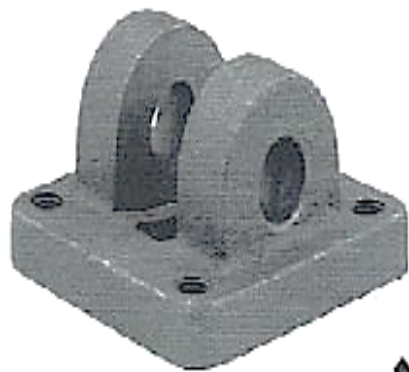
CLEVIS BRACKETS

CLEVIS BRACKETS



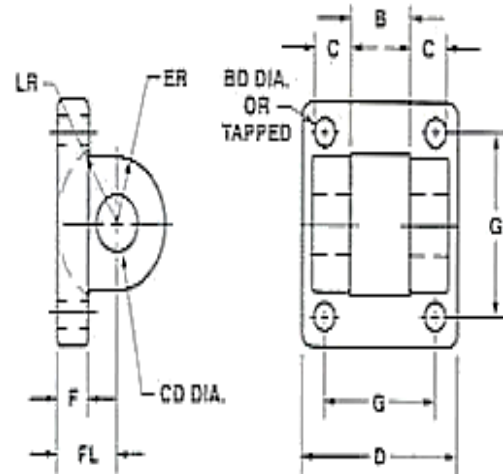
PART #	AA	BA	CB	CD	CW	DD	E	F	FL	LR	M	MR
BDCB-05	2.3	1 5/8	.765	1/2	1/2	3/8 - 24	2 1/2	3/8	1 1/8	1/2	1/2	9/16
BDCB-06	2.9	2 1/16	1.265	3/4	5/8	1/2 - 20	3	5/8	1 7/8	1	3/4	1 1/16
BDCB-07	3.6	2 9/16	1.265	3/4	5/8	1/2 - 20	3 1/2	5/8	1 7/8	1 1/16	3/4	1 1/16
BDCB-10	4.6	3 1/4	1.515	1	3/4	5/8 - 18	4 1/2	3/4	2 1/4	1 1/4	1	1 1/8
BDCB-13	5.4	3 13/16	2.032	1 3/8	1	5/8 - 18	5	7/8	3	1 7/8	1 3/8	1 3/4
BDCB-17	7.0	4 15/16	2.531	1 3/4	1 1/4	7/8 - 14	6 1/2	7/8	3 1/8	2	1 3/4	1 7/8
BDCB-20	8.1	5 3/4	2.531	2	1 1/4	1 - 14	7 1/2	1	3 1/2	2 1/8	2	2 1/8
BDCB-25	9.3	6 19/32	3.032	2 1/2	1 1/2	1 1/8 - 12	8 1/2	1	4	2 5/8	2 1/2	2 1/2
BDCB-30	10.5	7 1/2	3.032	3	1 1/2	1 1/4 - 12	9 1/2	1	4 1/4	2 7/8	2 3/4	2 3/4
BDCB-35	13.6	9 5/8	4.032	3 1/2	2	1 3/4 - 12	12 5/8	1 11/16	5 11/16	3 5/8	3 1/2	3 1/2
BDCB-40	16.2	11 1/2	4.532	4	2 1/4	2 - 12	14 7/8	1 15/16	6 7/16	4	4	4

MATERIAL: 05 thru 20, Ductile Iron Casting; 25 thru 40, Weldment



DETACHABLE MOUNTS

MP1 DETACHABLE MOUNTS



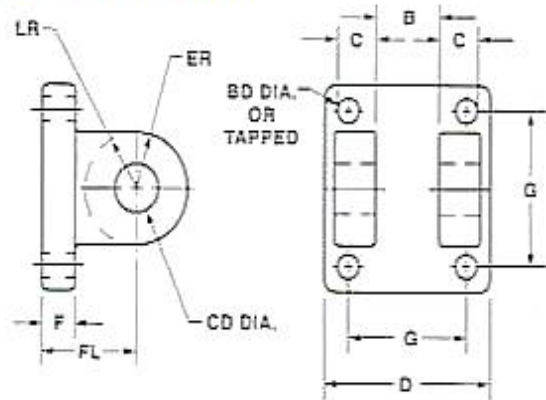
PART #	CD	FL	F	B	C	D	ER	G	LR	TAPPED	B-D DIA.
BMP1-15	.502	.75	.38	.76	.50	2.00	.62	1.43	.62	1/4 - 28	.28
BMP1-2	.502	.75	.38	.76	.50	2.50	.62	1.84	.62	5/16 - 24	.34
BMP1-25	.502	.75	.38	.76	.50	3.00	.62	2.19	.62	5/16 - 24	.34
BMP1-32	.752	1.25	.63	1.26	.62	3.75	.87	2.77	.87	3/8 - 24	.41
BMP1-4	.752	1.25	.63	1.26	.62	4.50	.87	3.32	.87	3/8 - 24	.41
BMP1-5	.752	1.25	.63	1.26	.62	5.50	.87	4.10	.87	1/2 - 20	.53
BMP1-6	1.002	1.50	.75	1.51	.75	6.50	1.25	4.88	1.13	1/2 - 20	.53

MATERIAL: Gray Iron, Class 30 Casting; NOTE: When ordering add "T" for Tapped or "H" for Thru Holes; Example: BMP1-15-T (for Tapped Mounting Holes)



DETACHABLE MOUNTS

MP2 DETACHABLE MOUNTS



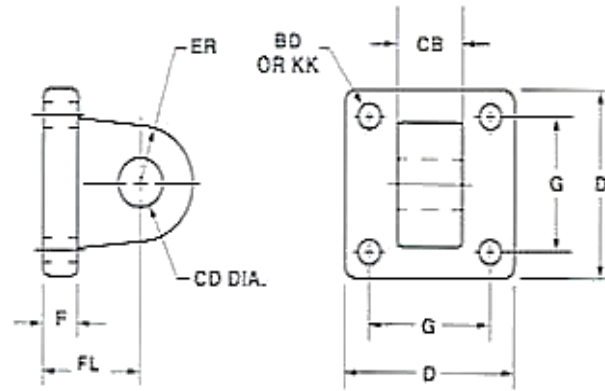
PART #	CD	FL	F	B	C	D	ER	G	TAPPED	B-D DIA.
BMP2-15	.502	1.13	.38	.76	.50	2.00	.62	1.43	1/4 - 28	.28
BMP2-2	.502	1.13	.38	.76	.50	2.50	.62	1.84	5/16 - 24	.34
BMP2-25	.502	1.13	.38	.76	.50	3.00	.62	2.19	5/16 - 24	.34
BMP2-32	.752	1.88	.63	1.26	.62	3.75	.87	2.77	3/8 - 24	.41
BMP2-4	.752	1.88	.63	1.26	.62	4.50	.87	3.32	3/8 - 24	.41
BMP2-5	.752	1.88	.63	1.26	.62	5.50	.87	4.10	1/2 - 20	.53
BMP2-6	1.002	2.25	.75	1.51	.75	6.50	1.12	4.88	1/2 - 20	.53

MATERIAL: Gray Iron, Class 30 Casting; NOTE: When ordering add "T" for Tapped or "H" for Thru Holes; Example: BMP2-15-T (for Tapped Mounting Holes)



DETACHABLE MOUNTS

MP4 DETACHABLE MOUNTS

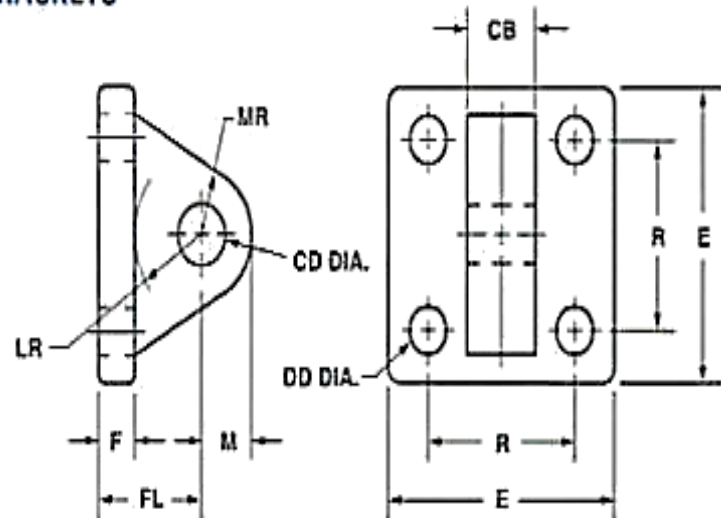


PART #	CD	FL	F	CB	D	ER	G	KK	B-D DIA.
BMP4-15	.502	1.13	.38	.75	2.00	.62	1.43	1/4 - 28	.28
BMP4-2	.502	1.13	.38	.75	2.50	.62	1.84	5/16 - 24	.34
BMP4-25	.502	1.13	.38	.75	3.00	.62	2.19	5/16 - 24	.34
BMP4-32	.752	1.88	.63	1.25	3.75	.87	2.77	3/8 - 24	.41
BMP4-4	.752	1.88	.63	1.25	4.50	.87	3.32	3/8 - 24	.41

MATERIAL: Gray Iron, Class 30 Casting; NOTE: When ordering add "T" for Tapped or "H" for Thru Holes; Example: BMP4-15-T (for Tapped Mounting Holes)



EYE BRACKETS



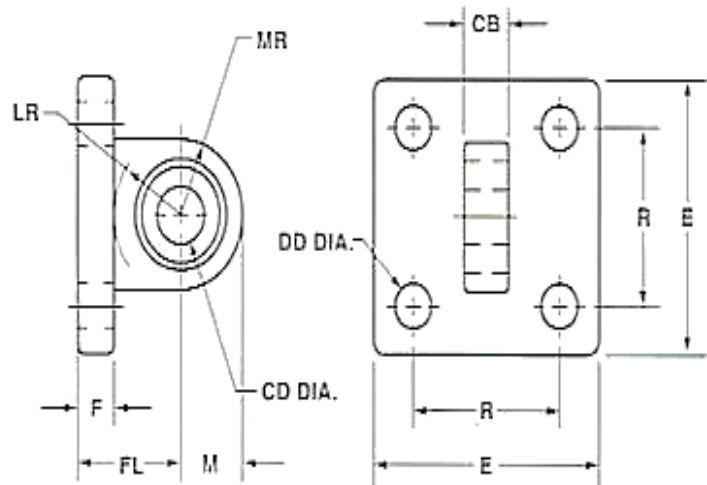
PART #	CB	CD	DD	E	F	FL	LR	M	MR	R
BDEB-05	3/4	1/2	13/32	2 1/2	3/8	1 1/8	3/4	1/2	9/16	1.63
BDEB-07	1 1/4	3/4	17/32	3 1/2	5/8	1 7/8	1 1/4	3/4	7/8	2.56
BDEB-10	1 1/2	1	21/32	4 1/2	3/4	2 1/4	1 1/2	1	1 1/4	3.25
BDEB-10H	1 1/2	1	21/32	4 1/2	7/8	2 3/8	1 1/2	1	1 1/4	3.25
BDEB-13	2	1 3/8	21/32	5	7/8	3	2 1/8	1 3/8	1 5/8	3.81
BDEB-17	2 1/2	1 3/4	29/32	6 1/2	7/8	3 1/8	2 1/4	1 3/4	2 1/8	4.95
BDEB-17H	2 1/2	1 3/4	29/32	6 1/2	1 1/8	3 3/8	2 1/4	1 3/4	2 1/8	4.95
BDEB-20	2 1/2	2	1 1/16	7 1/2	1	3 1/2	2 1/2	2	2 7/16	5.75
BDEB-20H	2 1/2	2	1 1/16	7 1/2	1 1/2	4	2 1/2	2	2 7/16	5.75
BDEB-25	3	2 1/2	1 3/16	8 1/2	1	4	3	2 1/2	3	6.59
BDEB-25H	3	2 1/2	1 3/16	8 1/2	1 3/4	4 3/4	3	2 1/2	3	6.59
BDEB-30	3	3	1 5/16	9 1/2	1	4 1/4	3 1/4	3	3 1/4	7.50
BDEB-30H	3	3	1 5/16	9 1/2	2	5 1/4	3 1/4	3	3 1/4	7.50
BDEB-35	4	3 1/2	1 13/16	12 5/8	1 11/16	5 11/16	4	3 1/2	4 1/8	9.62
BDEB-40	4 1/2	4	2 1/16	14 7/8	1 15/16	6 7/16	4 1/2	4	5 1/4	11.50

MATERIAL: 05 thru 10H, 1144 Steel Forging; 13 thru 35, Ductile Iron Casting
 "H" Denotes heavy base



**SPHERICAL
ROD ACCESSORIES**

SPHERICAL EYE BRACKETS

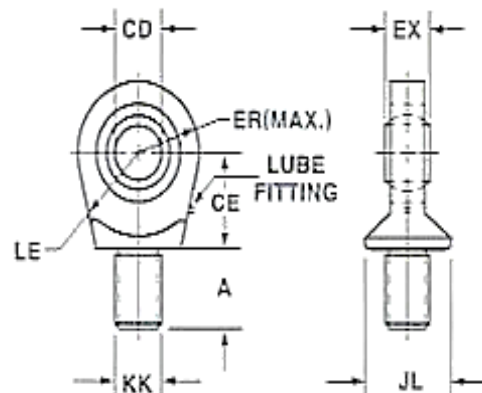


PART #	CB	CD - .0005	DD	E	F	FL	LR	M	MR	R
BDS-05	1/2	.5000	13/32	2 1/2	3/8	1 1/8	3/4	11/16	11/16	1.62
BDS-07	3/4	.7500	17/32	3 1/2	5/8	1 7/8	1 1/4	1 3/16	1 3/16	2.56
BDS-10	1	1.0000	21/32	4 1/2	3/4	2 1/4	1 1/2	1 3/8	1 3/8	3.25
BDS-13	1 3/8	1.3750	21/32	5	7/8	3	2 1/8	2	2	3.81
BDS-17	1 1/2	1.7500	29/32	6 1/2	7/8	3 1/8	2 1/4	2 1/8	2 1/8	4.94
BDS-20	1 3/4	2.0000	1 1/32	7 1/2	1	3 1/2	2 1/2	2 3/8	2 3/8	5.75

MATERIAL: 05 thru 10, 1144 Steel Forging; 13 thru 20, Steel Weldment

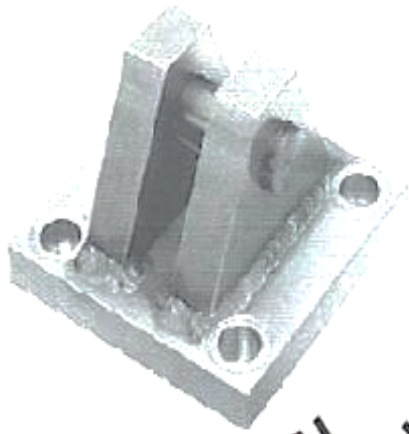


SPHERICAL ROD EYES



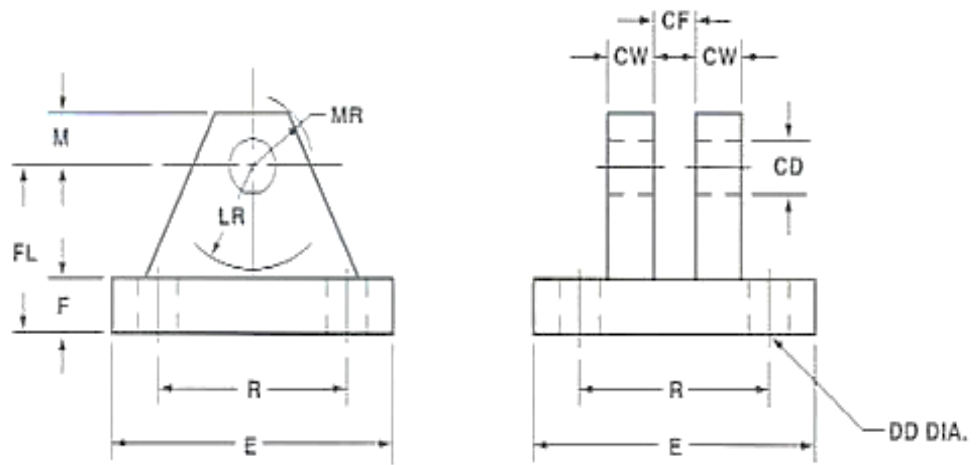
PART #	CD - .0005	A	CE	EX	ER	LE	KK	JL
RES-05	.5000	11/16	7/8	7/16	7/8	3/4	7/16 - 20	7/8
RES-07	.7500	1	1 1/4	21/32	1 1/4	1 1/16	3/4 - 16	1 5/16
RES-10	1.0000	1 1/2	1 7/8	7/8	1 3/8	1 7/16	1 - 14	1 1/2
RES-13	1.3750	2	2 1/8	1 3/16	1 13/16	1 7/8	1 1/4 - 12	2
RES-17	1.7500	2 1/8	2 1/2	1 17/32	2 3/16	2 1/8	1 1/2 - 12	2 1/4
RES-20	2.0000	2 7/8	2 3/4	1 3/4	2 5/8	2 1/2	1 7/8 - 12	2 3/4

MATERIAL: Ductile Iron Casting



**SPHERICAL
ROD ACCESSORIES**

SPHERICAL CLEVIS BRACKETS



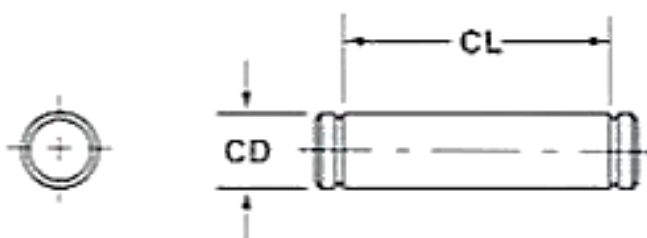
PART #	E	F	M	R	CD	CF	CW	DD	FL	LR	MR
CBS-05	3.00	.50	.50	2.05	.500	.44	.50	.41	1.50	.94	.62
CBS-07	3.75	.62	.88	2.76	.750	.66	.62	.53	2.00	1.38	1.00
CBS-10	5.50	.75	1.00	4.10	1.000	.88	.75	.53	2.50	1.69	1.19
CBS-13	6.50	.88	1.38	4.95	1.375	1.19	1.00	.66	3.50	2.44	1.62
CBS-17	8.50	1.25	1.75	6.58	1.750	1.53	1.25	.91	4.50	2.88	2.06
CBS-20	10.62	1.50	2.00	7.92	2.000	1.75	1.50	.91	5.00	3.31	2.38

MATERIAL: Steel Weldment



**SPHERICAL
ROD ACCESSORIES**

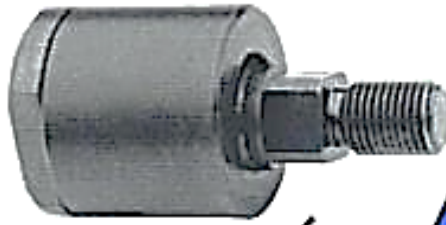
PIVOT PINS FOR SPHERICAL CLEVIS BRACKETS



PART #	CD	CL
BDP-05-CBS	.4997-.0004	1 9/16
BDP-07-CBS	.7497-.0005	2 1/32
BDP-10-CBS	.9997-.0005	2 1/2
BDP-13-CBS	1.3746-.0006	3 5/16
BDP-17-CBS	1.7496-.0006	4 7/32
BDP-20-CBS	1.9996-.0007	4 15/16

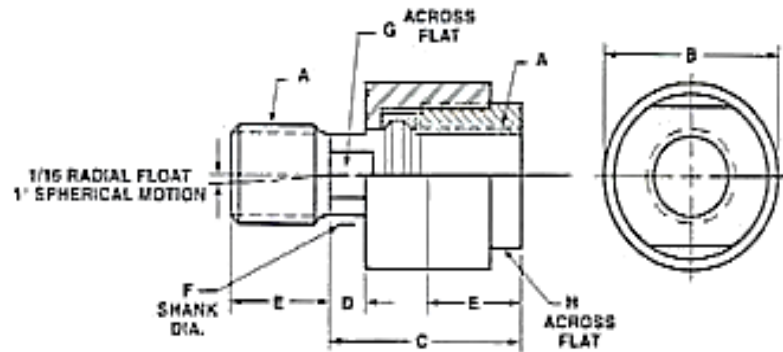
MATERIAL: CD1144

HEAT TREATMENT: Nitrotec



ALIGNMENT COUPLERS

ALIGNMENT COUPLERS



PART #	A	B	C	D	E	F	G	H	MAX PULL AT YIELD
250F	1/4 -28	7/8	1 1/4	1/4	5/8	.245	3/16	13/16	4,000
312F	5/16 -24	7/8	1 1/4	1/4	5/8	.308	1/4	13/16	4,000
375C	3/8 -16	7/8	1 1/4	1/4	5/8	.369	5/16	13/16	5,000
375F	3/8 -24	7/8	1 1/4	1/4	5/8	.370	5/16	13/16	5,000
437F	7/16 -20	1 1/4	2	1/2	3/4	5/8	9/16	1 1/8	10,000
500C	1/2 -13	1 1/4	2	1/2	3/4	5/8	9/16	1 1/8	14,000
500F	1/2 -20	1 1/4	2	1/2	3/4	5/8	9/16	1 1/8	14,000
625F	5/8 -18	1 1/4	2	1/2	3/4	5/8	1/2	1 1/8	14,000
750C	3/4 -10	1 3/4	2 5/16	5/16	1 1/8	31/32	7/8	1 1/2	34,000
750F	3/4 -16	1 3/4	2 5/16	5/16	1 1/8	31/32	7/8	1 1/2	34,000
875F	7/8 -14	1 3/4	2 5/16	5/16	1 1/8	31/32	7/8	1 1/2	34,000
1000C	1 -8	2 1/2	2 15/16	1/2	1 5/8	1 3/8	1 1/4	2 1/4	64,000
1000F	1 -14	2 1/2	2 15/16	1/2	1 5/8	1 3/8	1 1/4	2 1/4	64,000
1250F	1 1/4 -12	2 1/2	2 15/16	1/2	1 5/8	1 3/8	1 1/4	2 1/4	64,000
1375F	1 3/8 -12	2 1/2	2 15/16	1/2	1 5/8	1 3/8	1 1/4	2 1/4	64,000
1500F	1 1/2 -12	3 1/4	4 3/8	13/16	2 1/4	1 3/4	1 1/2	3	120,000
1750F	1 3/4 -12	3 1/4	4 3/8	13/16	2 1/4	1 3/4	1 1/2	3	120,000
1875F	1 7/8 -12	3 3/4	5 7/16	11/16	3	2 1/4	1 7/8	3 1/2	240,000
2000F	2 -12	3 3/4	5 7/16	11/16	3	2 1/4	1 7/8	3 1/2	240,000

"F" Denotes Fine Thread; "C" Denotes Coarse Thread; Special Threads Upon Request; Stainless Steel Available Thru 1000F; All Available With Electroless Nickel Plate

PART #	A	B	C	D	E	F	G	H	MAX PULL AT YIELD (Kn)
100M	M10 X 1.25	31.7	50.8	12.7	20	15.8	14.2	29	36
120M	M12 X 1.25	31.7	50.8	12.7	20	15.8	14.2	29	44
160M	M16 X 1.50	31.7	50.8	12.7	20	15.8	14.2	29	63
200M	M20 X 1.50	44.4	59.4	8	28.5	24.5	22.2	38.1	150
240M	M24 X 2.00	63.5	73	11	41	35	32	57	242
350M	M35 X 2.00	82.5	111	20.6	57	44.5	38	76	528

